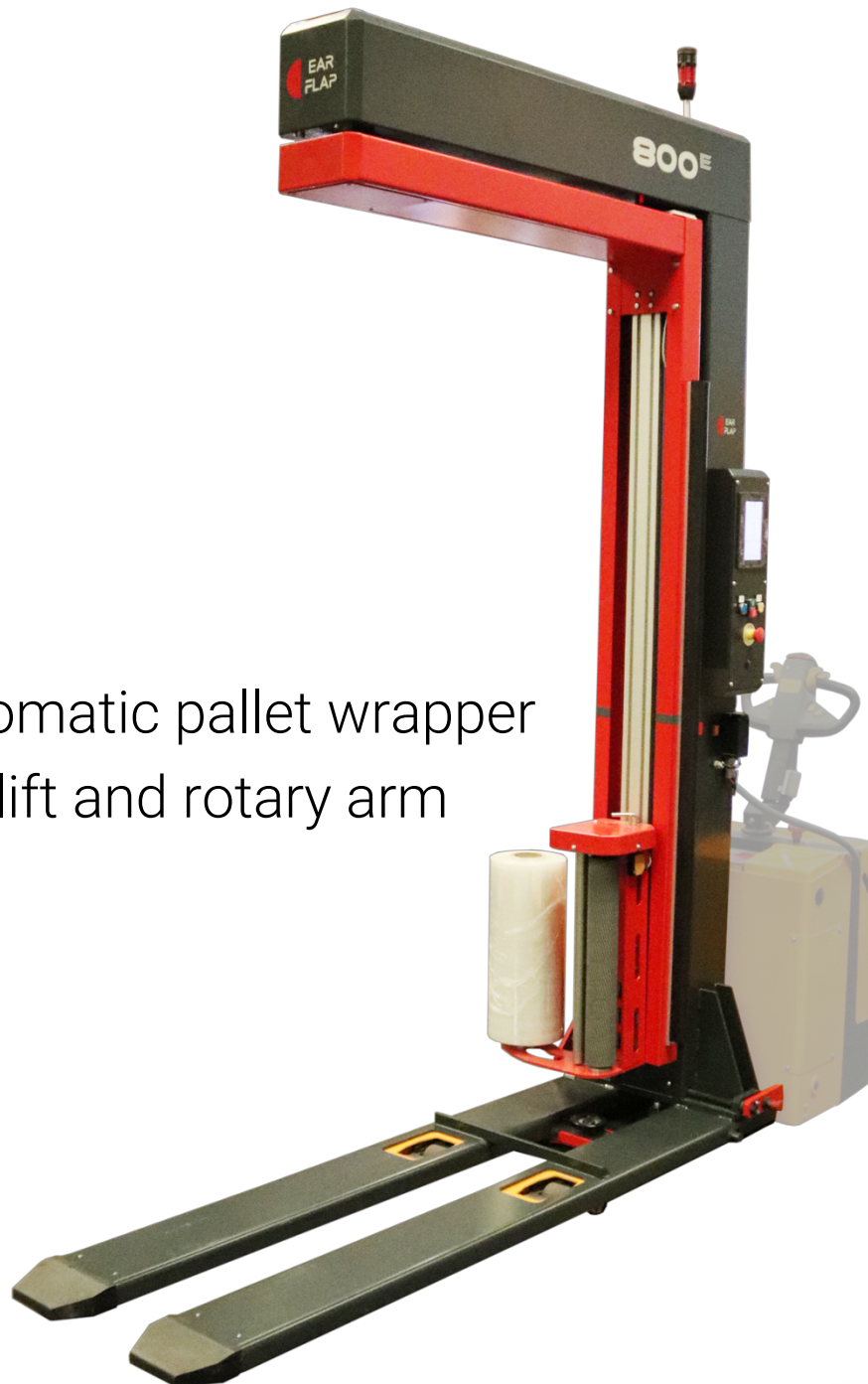




Packaging Machinery & Systems
made for you



Semiautomatic pallet wrapper
With forklift and rotary arm

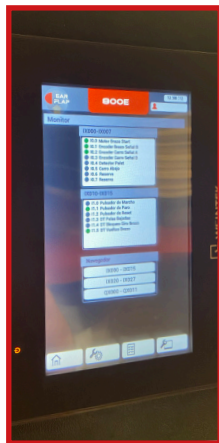
800^e

STANDARD MACHINE TECHNICAL CHARACTERISTICS

- Battery capacity: depending on the electric pallet jack.
- Powered film carriage with adjustable speed.
- Automatic load height detection by photocell.
- Adjustable mechanical film brake.
- Soft start/stop frequency inverter with return to start position.
- 4 wrapping programs: Single / Cross-wrap/ Cross-plus / Full.
- Wrapping cycles counter.
- Upper and lower independent reinforcement adjustment cycles.
- START/STOP Stack light.
- SIEMENS PLC control and LCD touch screen.
- Contact safety system: it stops the wrapping arm in case of contact with an obstacle.
- Holding pallet with load by means of yoyo system.



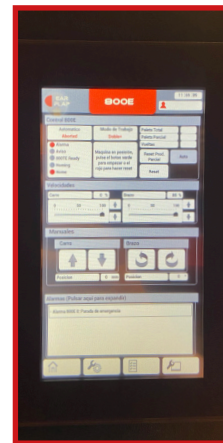
Control panel with touch screen



Data and analysis screen.



Main screen. Status and basic control

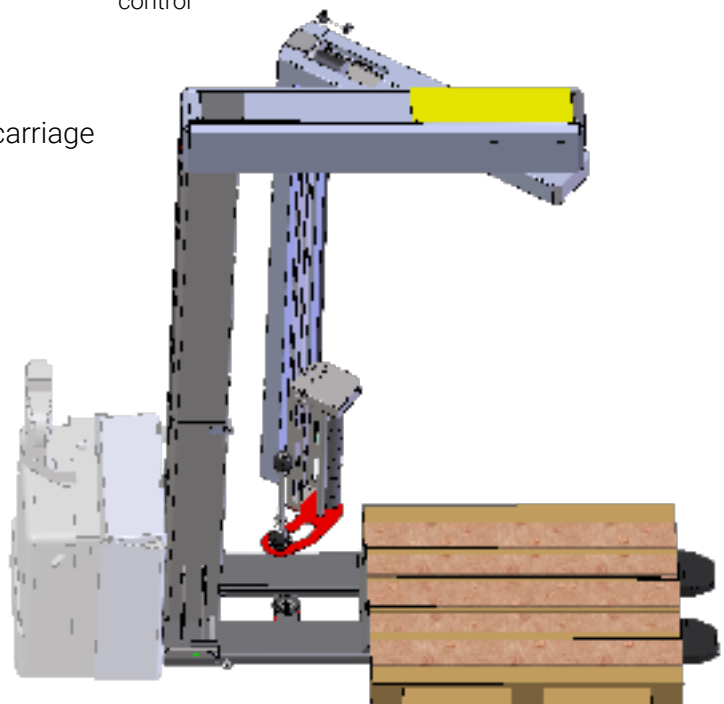


Main parameters settings.



Powered film carriage

Contact safety system in the wrapping arm

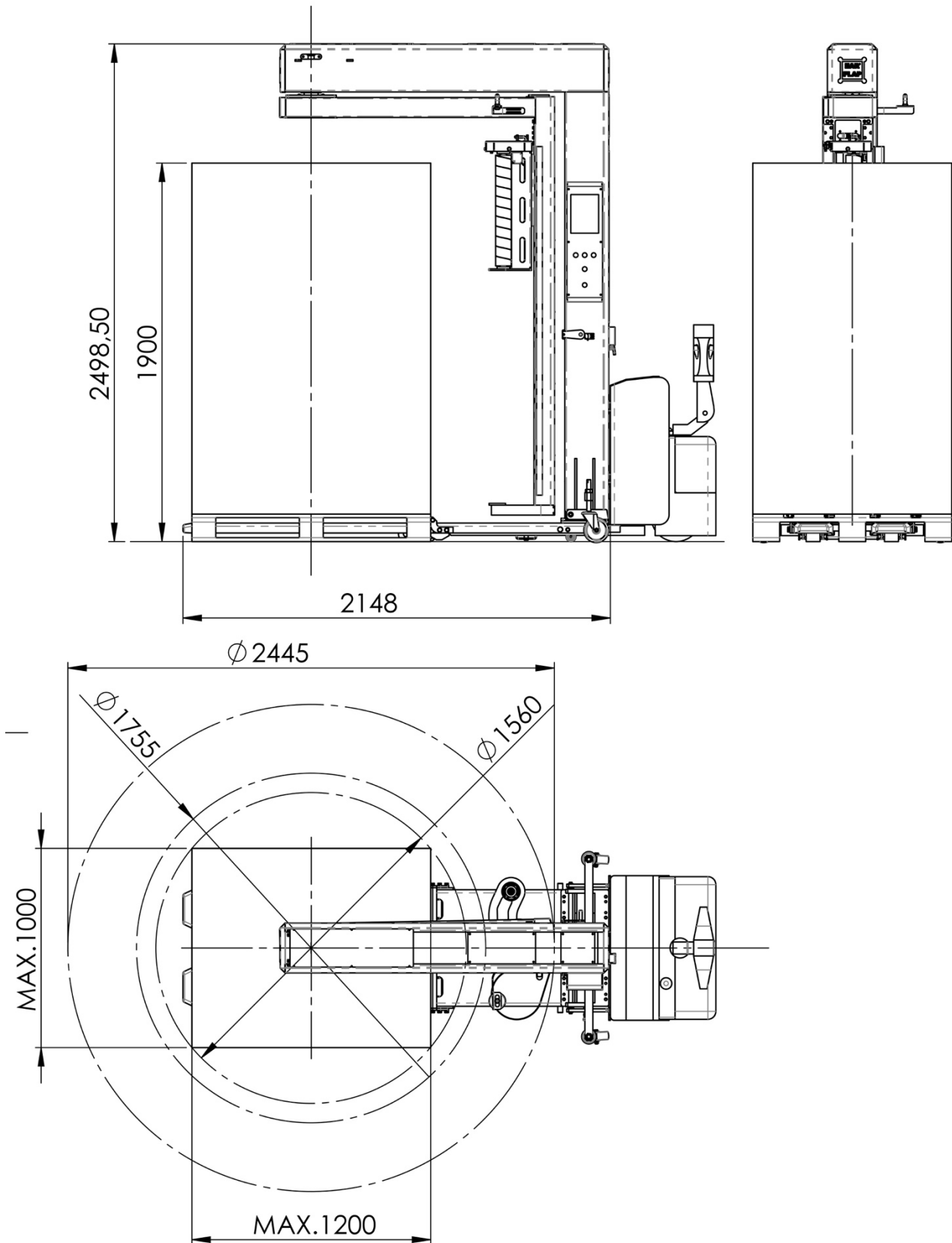


Technical features	Estándar
Maximum height	1.900 mm *
Pallet dimensions	Up to 1.200 x 1.000 mm
Charger supply voltage	240 V DC
Film carriage	Adjustable mechanical film brake
Maximum weight	According to electric pallet jack
Stop in position	Standard
Progressive start/stop with frequency inverter	Standard
Load detection by photocell	Standard
PLC with touch screen	Standard

* Other heights and custom configurations available on request



Standard machine dimensions



OPTIONAL: Electric pallet jack TOYOTA LWE160

Technical features	Estándar
Power unit	Electric
Lifting capacity	1600 Kg.
Distance between centre	1314 mm.
Weight with battery	524 Kg.
Lifting	120 mm.
Height, fork in the down position	85 mm.
Total length	1688 mm.
Total width	726 mm.
Turn radius	1477 mm.
Speed with / without load	6,0 / 6,0 Km/h
Movement brake	Electromagnetic.
Battery weight	214 Kg.
Battery voltage / Nominal capacity	24 V. / 225 Ah

